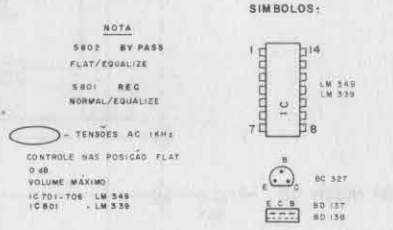
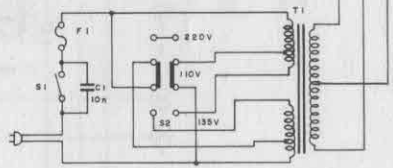
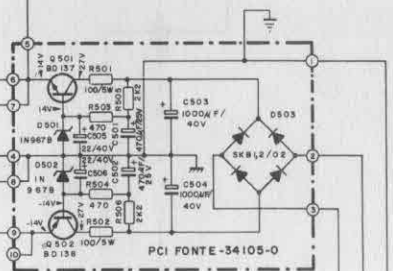
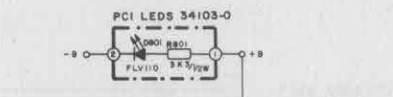
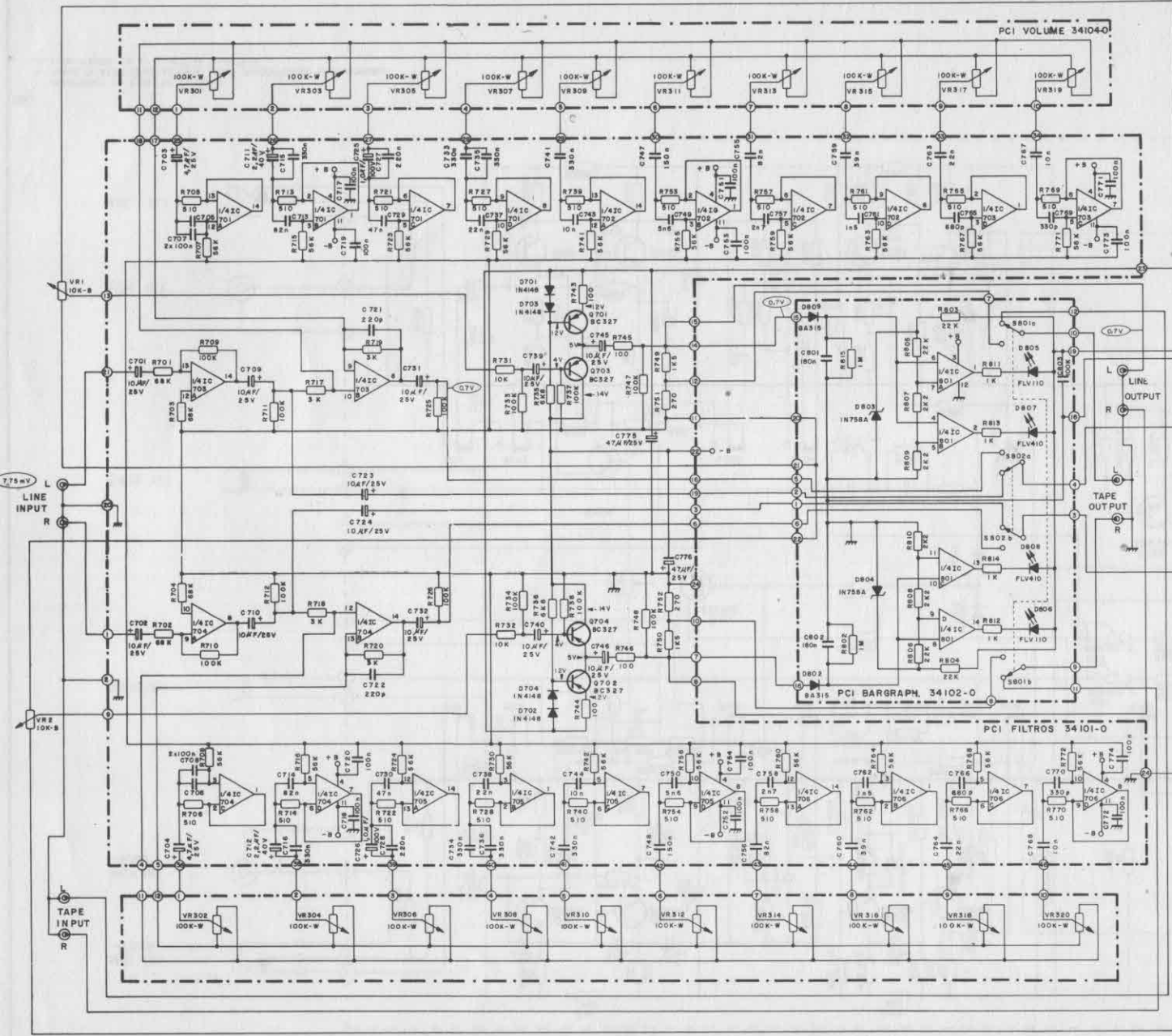


701	0	0	0	14	0	0	0	0	0	0	0	14	0	0	0
702	0	0	0	14	0	0	0	0	0	0	0	14	0	0	0
703	0	0	0	14	0	0	0	0	0	0	0	14	0	0	0
704	0	0	0	14	0	0	0	0	0	0	0	14	0	0	0
705	0	0	0	14	0	0	0	0	0	0	0	14	0	0	0
706	0	0	0	14	0	0	0	0	0	0	0	14	0	0	0
707	0	0	0	14	0	0	0	0	0	0	0	14	0	0	0
708	0	0	0	14	0	0	0	0	0	0	0	14	0	0	0
801	12	12	14	0	0	0	0	1	0	1	0	0	0	12	12

HONOR 80000 ohms POR VOLTS DC
15.000 ohms POR VOLTS AC



NOTAS:
1-RESISTORES EM OHMS(L) M(K)100(L) M(M)100K
2-TODOS OS RESISTORES 1/4 SALVO ESPECIFICAÇÃO EM CONTRÁRIO
3 CAPACITORES EM AF $\times 10^3$ AP $\times 10^6$ PF

ESPECIFICAÇÕES E CIRCUITOS SUJEITOS A ALTERAÇÕES SEM PRÉVIO AVISO.

IND	IND E COM DE COMP	DATA	27/04/79
MOD.	EQ-6080	DES. N°	A1-0151
TIPO	EQUILIZADOR GRAFICO ESTEREOFONICO		
COD.	1-00-80410-00		